



TIIG

INJURY SURVEILLANCE IN THE NORTH WEST OF ENGLAND

Injury attendances to Stepping Hill Emergency Department

October 2012 to September 2013

This report summarises recorded injury attendances to Stepping Hill Hospital Emergency Department (ED) between October 2012 and September 2013.

Between October 2012 and September 2013 there were 34,634 injury attendances to Stepping Hill Hospital ED. Males accounted for over half (53%) of all attendances. The month with the highest injury attendances was July (n=3,370) with February having the lowest attendances (n=2,560) (**Figure 1**). The majority (61%) of attendances did not have a specific injury group recorded. Of the specified injury groups, falls (14%) accounted for the highest proportion followed by sports injury (12%), road traffic collision (RTC) (6%) and assault (3%) (**Table 1**).

For all injuries, the highest proportion of attendances were for persons aged 5 to 19 (25%) and 20 to 34 (21%) years (**Figure 2**). Over half (51%) of fall attendees were aged 65 or over. Over four in ten (42%) of assault attendees were aged 20 to 34 years. Almost four in ten (38%) of RTC attendees were aged 20 to 34 years (**Figure 3**).

Of those that stated an ethnicity, the majority (97%) were white. (**Table 2**).

The disposal of a patient can give an indication of the severity of the injuries sustained. Almost six in ten (58%) of attendees were discharged, nearly three in

ten (28%) were referred, and 14% were admitted (**Table 3**).

Table 4 shows the arrival methods of attendees at Stepping Hill ED. Over seven in ten (72%) arrived by car and 19% by ambulance.

Table 5 presents data for assault attendees to Stepping Hill Hospital ED. The majority of attendees were male (71%) and 42% were aged 20 to 34 years. A third (33%) of assault attendances arrived by ambulance.

Figure 1: Stepping Hill ED: Total injury attendances by gender and month, October 2012 to September 2013

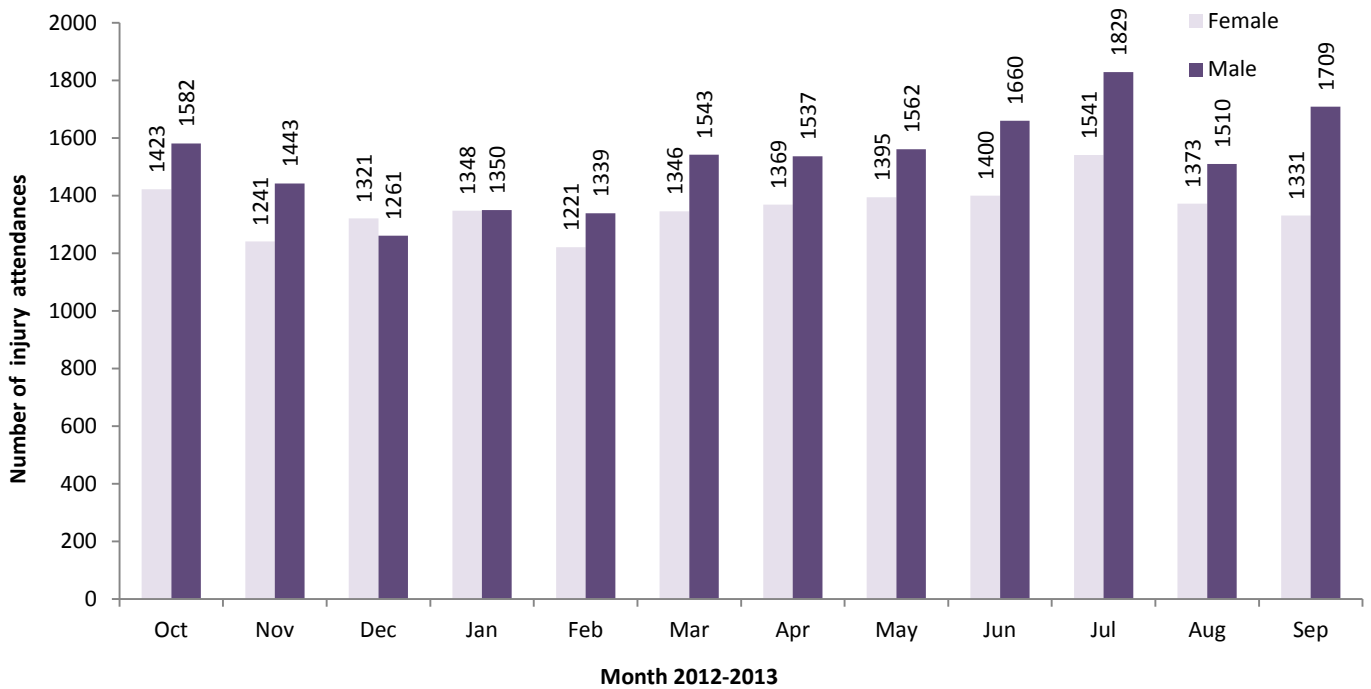


Table 1: Stepping Hill ED: Total injury attendances by injury group and month, October 2012 to September 2013

Injury group	Oct	Nov	Dec	Jan	Feb	Mar	Apr	May	Jun	Jul	Aug	Sep	Total	%
Other injury	1875	1608	1644	1733	1576	1700	1767	1780	1899	2079	1788	1788	21237	61
Fall	360	397	365	366	349	450	396	509	402	453	402	410	4859	14
Sports injury	365	323	194	248	314	379	404	358	387	365	260	456	4053	12
RTC	183	186	160	161	147	157	168	115	170	160	182	142	1931	6
Assault	111	79	118	95	74	96	69	99	74	83	84	108	1090	3
Burns and scalds	62	53	60	60	66	64	56	46	64	90	74	73	768	2
Bites and stings	49	38	41	35	34	43	46	50	64	140	93	63	696	2
Total	3005	2684	2582	2698	2560	2889	2906	2957	3060	3370	2883	3040	34634	100

Figure 2: Stepping Hill ED: Total injury attendances by age group and month, October 2012 to September 2013

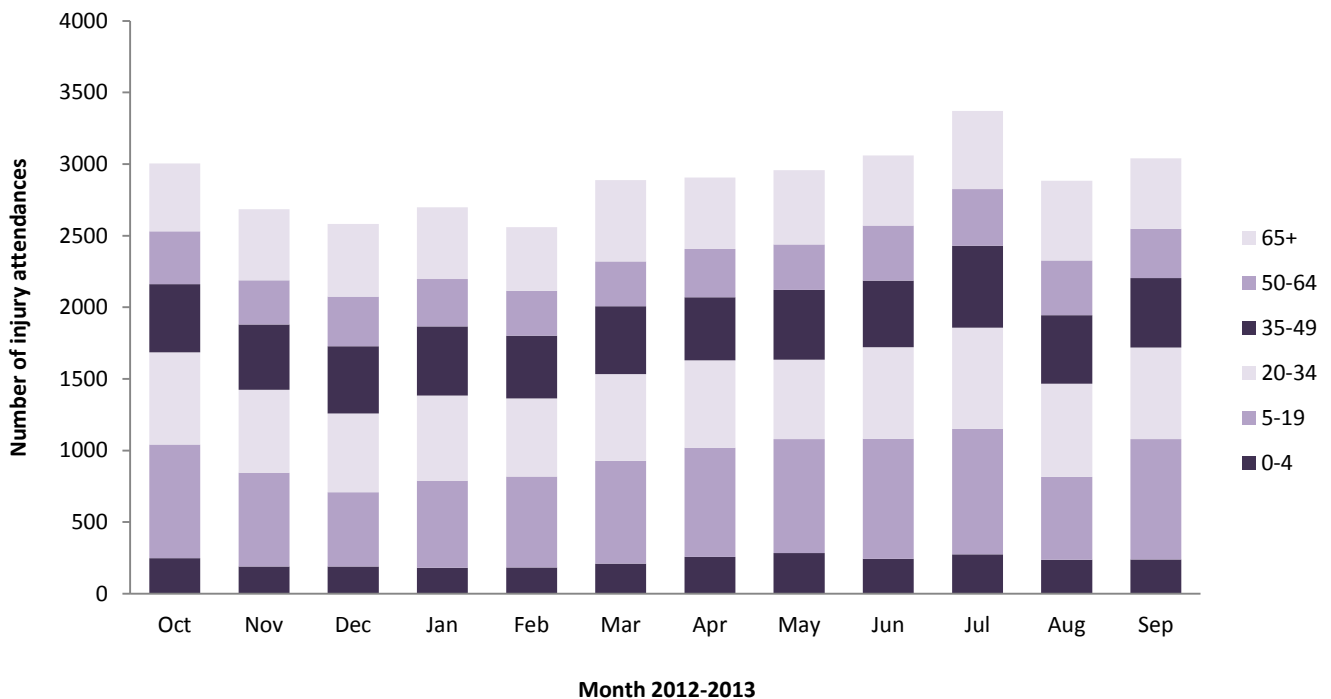


Figure 3: Stepping Hill ED: Total injury attendances by age group and injury group, October 2012 to September 2013

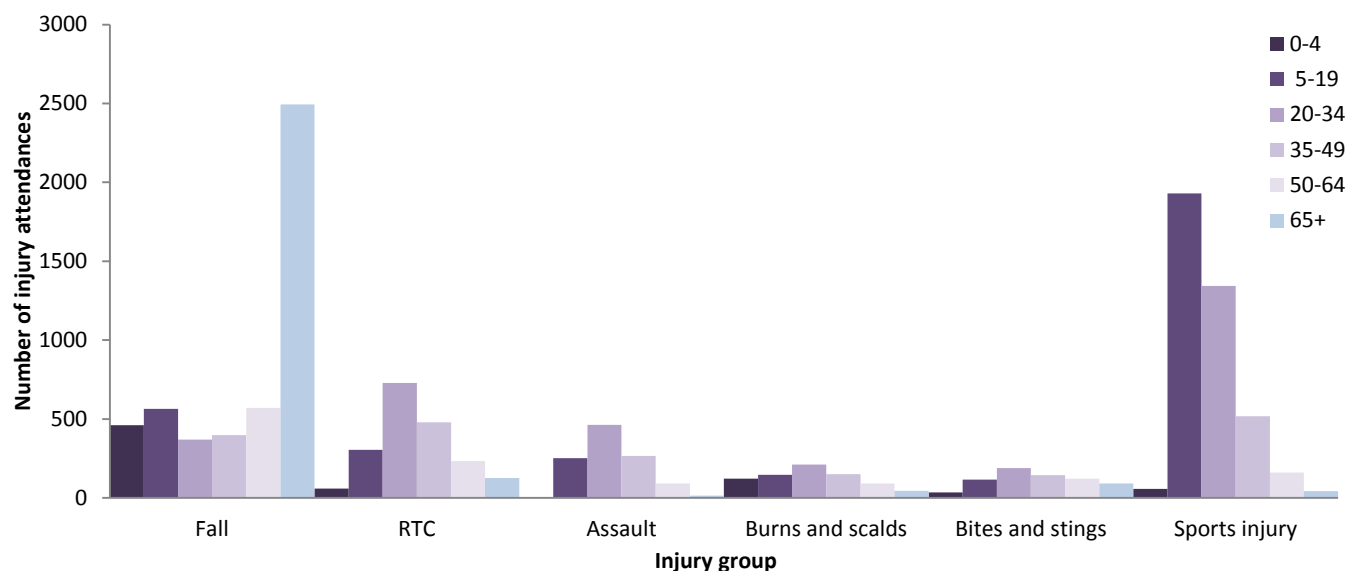


Table 2: Stepping Hill ED: Total injury attendances by ethnicity and month, October 2012 to September 2013¹

Ethnicity	Oct	Nov	Dec	Jan	Feb	Mar	Apr	May	Jun	Jul	Aug	Sep	Total	%
White	2555	2321	2243	2299	2219	2497	2521	2594	2600	2895	2481	2627	29852	86
Not stated	389	298	283	332	286	324	331	298	378	397	336	341	3993	12
Mixed	18	15	7	13	13	16	16	21	20	17	20	23	199	1
Pakistani	15	11	10	17	11	17	14	14	18	17	11	16	171	0
Indian	7	9	8	<15	***	9	7	10	9	8	10	7	97	0
Any other ethnic group	6	8	5	5	6	8	0	7	19	11	10	5	90	0
Black	6	5	5	8	9	7	12	5	8	9	8	6	88	0
Any other Asian background	***	8	9	10	10	***	***	***	<6	7	<10	10	80	0
Chinese	***	<6	5	***	***	***	***	***	***	7	***	***	41	0
Bangladeshi	***	***	7	0	***	***	0	0	0	2	0	***	23	0
Total	3005	2684	2582	2698	2560	2889	2906	2957	3060	3370	2883	3040	34634	100

Table 3: Stepping Hill ED: Total injury attendances by method of disposal and month, October 2012 to September 2013

Disposal	Oct	Nov	Dec	Jan	Feb	Mar	Apr	May	Jun	Jul	Aug	Sep	Total	%
Discharged	1813	1635	1465	1513	1431	1557	1660	1703	1846	1937	1633	1812	20005	58
Referral/follow-up	920	813	679	741	717	786	809	802	782	908	811	778	9546	28
Admitted	236	214	417	423	388	524	423	432	410	472	405	420	4764	14
Other	36	22	21	21	24	22	14	20	22	53	34	30	319	1
Total	3005	2684	2582	2698	2560	2889	2906	2957	3060	3370	2883	3040	34634	100

Table 4: Stepping Hill ED: Total injury attendances by arrival mode and month, October 2012 to September 2013¹

Arrival mode	Oct	Nov	Dec	Jan	Feb	Mar	Apr	May	Jun	Jul	Aug	Sep	Total	%
Car	2239	1936	1777	1901	1876	2077	2099	2113	2217	2469	1970	2172	24846	72
Ambulance	496	556	592	555	475	585	489	547	532	553	596	564	6540	19
Bus	91	84	66	84	72	88	96	109	102	134	108	100	1134	3
Taxi	82	45	56	68	63	58	72	96	73	83	98	95	889	3
Walked	62	38	52	58	42	51	51	63	58	90	81	71	717	2
Other	19	15	21	15	21	11	83	15	53	18	16	22	309	1
Police	10	6	<20	13	7	13	11	11	<15	7	9	11	128	0
Public transport	***	***	***	***	***	***	***	***	10	8	***	***	42	0
Bicycle	***	***	0	***	***	***	***	***	***	8	***	***	29	0
Total	3005	2684	2582	2698	2560	2889	2906	2957	3060	3370	2883	3040	34634	100

¹ Please note that all numbers less than five have been suppressed in line with patient confidentiality and if there is only one number <5 in a category then two numbers will be suppressed at the next level.

Table 5: Stepping Hill ED: Total assault attendances by gender, arrival mode and age group, October 2012 to September 2013²

Gender	Assault attendees (n=1,090)		All injury attendees (n=34,634)
	n	%	%
Male	778	71	53
Female	312	29	47
Arrival mode			
Ambulance	360	33	19
Other	730	67	81
Age group			
0 - 4	***	0	8
5 - 19	251	23	25
20 - 34	463	42	21
35 - 49	267	24	17
50 - 64	91	8	12
65 plus	<20	1	18

Published November 2013
 Jennifer Brizell (TIIG researcher)
 Centre for Public Health, Faculty of Education, Health and Community, Liverpool John Moores University
 2nd Floor, Henry Cotton Campus, 15-21 Webster Street, Liverpool, L3 2ET
 Tel: 0151 231 4500 Email: j.s.brizell@ljmu.ac.uk
 Website: www.tiig.info (please note all data requests should be made through the TIIG website)
 Twitter: [@TIIG_CPH](https://twitter.com/TIIG_CPH)

² Please note that all numbers less than five have been suppressed in line with patient confidentiality and if there is only one number <5 in a category then two numbers will be suppressed at the next level.